

## Vital Signs: Overdoses of Prescription Opioid Pain Relievers and Other Drugs Among Women — United States, 1999–2010

### Abstract

**Background:** Overdose deaths have increased steadily over the past decade. This report describes drug-related deaths and emergency department (ED) visits among women.

**Methods:** CDC analyzed rates of fatal drug overdoses and drug misuse- or abuse-related ED visits among women using data from the National Vital Statistics System (1999–2010) and the Drug Abuse Warning Network (2004–2010).

**Results:** In 2010, a total of 15,323 deaths among women were attributed to drug overdose, a rate of 9.8 per 100,000 population. Deaths from opioid pain relievers (OPRs) increased fivefold between 1999 and 2010 for women; OPR deaths among men increased 3.6 times. In 2010, there were 943,365 ED visits by women for drug misuse or abuse. The highest ED visit rates were for cocaine or heroin (147.2 per 100,000 population), benzodiazepines (134.6), and OPR (129.6). ED visits related to misuse or abuse of OPR among women more than doubled between 2004 and 2010.

**Conclusions:** Although more men die from drug overdoses than women, the percentage increase in deaths since 1999 is greater among women. More women have died each year from drug overdoses than from motor vehicle–related injuries since 2007. Deaths and ED visits related to OPR continue to increase among women. The prominent involvement of psychotherapeutic drugs, such as benzodiazepines, among overdoses provides insight for prevention opportunities.

**Implications for Public Health Practice:** Health-care providers should follow guidelines for responsible prescribing, including screening and monitoring for substance abuse and mental health problems, when prescribing OPR. Health-care providers who treat women for pain should use their state's prescription drug monitoring program and regularly screen patients for psychological disorders and use of psychotherapeutic drugs, with or without a prescription.

### Introduction

In 2010, enough opioid pain relievers (OPR) were sold to medicate every adult in the United States with the equivalent of a typical dose of 5 mg of hydrocodone every 4 hours for 1 month (1), a 300% increase in the sales rate over 11 years. This rise in distribution of OPR is concomitant with increasing rates of drug overdose death and chronic, nonmedical use of OPR (2,3).

Differences between men and women related to prescription drug use outcomes are complicated. The death rate for OPR overdose is higher among men than women, but since 1993, hospitalizations for OPR overdoses have been more frequent

among women than men (4). During 2004–2008, women and men had similar emergency department (ED) visit rates related to nonmedical use of OPR and benzodiazepines (5). OPR prescribing and use patterns also differ by gender. Women are more likely than men to be prescribed OPR, to use them chronically, and to receive prescriptions for higher doses of OPR (6,7). This might be because the most common forms of pain are more prevalent among women, and pain is more intense and of longer duration in women than men (8,9). Women also might be more likely than men to engage in “doctor shopping” (receiving a prescription for a controlled substance from multiple providers), and more likely to be prescribed OPR combined



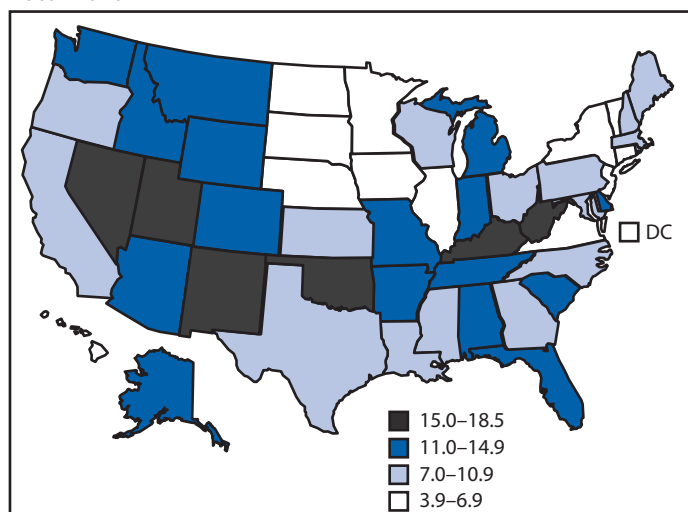
with sedatives (10,11). Sex-specific health risks associated with long-term OPR use among women include amenorrhea and infertility (12,13). Finally, the progression to dependence on OPR might be accelerated in women, and women with substance use disorders are more likely than men to face barriers in access to substance abuse treatment (14,15). Taken together, these health concerns indicate a need to examine drug overdose deaths and ED visits among women to guide development of targeted prevention strategies.

## Methods

For this report, death rates are based on the National Vital Statistics System multiple cause of death files (1999–2010). Drug poisoning deaths, referred to as drug overdose deaths in this report, were defined as those with an underlying cause of death classified using the *International Classification of Diseases, 10th Revision* (ICD-10) external cause of injury codes as X40–X44, X60–X64, X85, or Y10–Y14. Rates include injury deaths of any intent (unintentional, suicide, homicide, or undetermined) for U.S. residents. Among deaths with drug overdose as the underlying cause, CDC identified the type of drug involved based on ICD-10 codes for prescription drugs (T36–T39, T40.2–T40.4, T41–T43.5, and T43.8–T50.8), prescription OPR (T40.2–T40.4), benzodiazepines (T42.4), antidepressants (T43.0–T43.2), heroin (T40.1), and cocaine (T40.5). The codes used to categorize prescription drugs might capture some over-the-counter medications. Deaths involving more than one type of drug were counted in multiple categories. Rates were age adjusted to the 2000 U.S. Census population using bridged-race population estimates (Figure 1).\*

The Substance Abuse and Mental Health Services Administration's Drug Abuse Warning Network (DAWN) is a public health information system that tracks the impact of drug use, misuse, and abuse in the United States by monitoring drug-related hospital ED visits. This report used 2004–2010 DAWN public use files for analyses.† DAWN collects data from a stratified, simple random sample of approximately 220 nonfederal, short-stay general hospitals that operate 24-hour EDs. Rates presented in this report are based on the numbers of ED visits weighted to be representative of the U.S. population. Denominators for this report were based on U.S. Census postcensal estimates. DAWN defines misuse or abuse of a drug, based on information in the medical record, as taking a higher-than-recommended dose, taking a drug prescribed for another person, drug-facilitated assault (patient was administered a drug by another person for a malicious purpose), or documented

**FIGURE 1. Age-adjusted death rates\* for drug overdose deaths among women — National Vital Statistics System, United States, 2009–2010**



\* Deaths per 100,000 population; age-adjusted to the 2000 U.S. standard population using the bridge-race estimates.

misuse or abuse. ED visits related to the misuse or abuse of alcohol only by persons aged <21 years, which are typically included in DAWN misuse or abuse estimates, were not included in this analysis. ED visits involving more than one type of drug were counted in multiple categories.

## Results

In 2010, a total of 15,323 deaths among women were attributed to drug overdose, a rate of 9.8 per 100,000 population. Among these, a drug was specified in 10,922 (71.3%) deaths. One or more prescription drugs were involved in 9,292 (85%) of the drug-specified deaths among women, and OPRs were involved in 6,631 (71.3%) of the prescription drug overdose deaths. These numbers represent substantial increases from 1999 (5,591 drug overdose deaths among women and 1,287 OPR overdose deaths). The percentage increase in number of OPR overdose deaths was 415% for women and 265% for men. The rate for OPR deaths (4.2 per 100,000 population) was four times the rate for cocaine and heroin deaths combined (1.0) (Table 1). The drug overdose death rate among men (23,006 drug overdoses and 10,020 OPR overdose deaths in 2010) was 1.55 times the rate among women for all drugs (down from 2.1 times the rate in 1999).

Death rates varied by age and race. The rate for all drug overdose deaths among women was highest among those aged 45–54 years (21.8 per 100,000 population). American Indian/Alaska Native (14.5) and non-Hispanic white (12.7) women had the highest drug overdose death rates. The rate of suicide drug overdose deaths was similar for women (1.8) and men (1.7), although drug overdose-related suicide deaths accounted for 34% of all suicide

\* Information about bridged-race estimates is available at <http://wonder.cdc.gov/wonder/help/mcd.html>.

† Information about DAWN files is available at <http://www.icpsr.umich.edu/icpsrweb/SAMHDA>.

**TABLE 1. Drug overdose deaths\* and rates† among women, by selected characteristics, and comparison with 1999 — National Vital Statistics System, United States, 2010**

| Characteristic                    | Antidepressants |                  | Benzodiazepines |                  | Cocaine/Heroin |                  | Opioids |                   | All prescription drugs |                     | All drugs |                     | M:F rate ratio (all drugs), 2010 | % change in female rate (all drugs), 1999 to 2010 |
|-----------------------------------|-----------------|------------------|-----------------|------------------|----------------|------------------|---------|-------------------|------------------------|---------------------|-----------|---------------------|----------------------------------|---|
|                                   | No.             | Rate (CI)        | No.             | Rate (CI)        | No.            | Rate (CI)        | No.     | Rate (CI)         | No.                    | Rate (CI)           | No.       | Rate (CI)           |                                  |   |
| <b>Total</b>                      | 2,204           | 1.4<br>(1.3–1.5) | 2,579           | 1.6<br>(1.6–1.7) | 1,598          | 1.0<br>(1.0–1.1) | 6,631   | 4.2<br>(4.1–4.3)  | 9,292                  | 5.9<br>(5.8–6.0)    | 15,323    | 9.8<br>(9.6–9.9)    | 1.55                             | 151.3   |
| <b>Age groups (yrs)</b>           |                 |                  |                 |                  |                |                  |         |                   |                        |                     |           |                     |                                  |   |
| <18                               | 12              | —                | 15              | —                | 11             | —                | 66      | 0.2<br>(0.1–0.2)  | 91                     | 0.3<br>(0.2–0.3)    | 138       | 0.4<br>(0.3–0.4)    | 1.50                             | 100.0   |
| 18–24                             | 66              | 0.4<br>(0.3–0.6) | 159             | 1.1<br>(0.9–1.2) | 172            | 1.1<br>(1.0–1.3) | 396     | 2.6<br>(2.4–2.9)  | 511                    | 3.4<br>(3.1–3.7)    | 899       | 6.0<br>(5.6–6.4)    | 2.58                             | 160.9   |
| 25–34                             | 285             | 1.4<br>(1.2–1.6) | 451             | 2.2<br>(2.0–2.4) | 326            | 1.6<br>(1.4–1.8) | 1,093   | 5.3<br>(5.0–5.7)  | 1,423                  | 7.0<br>(6.6–7.3)    | 2,422     | 11.9<br>(11.4–12.3) | 2.10                             | 158.7   |
| 35–44                             | 483             | 2.3<br>(2.1–2.5) | 593             | 2.9<br>(2.6–3.1) | 381            | 1.8<br>(1.7–2.0) | 1,515   | 7.3<br>(7.0–7.7)  | 2,014                  | 9.8<br>(9.3–10.2)   | 3,464     | 16.8<br>(16.2–17.3) | 1.48                             | 93.1  |
| 45–54                             | 785             | 3.4<br>(3.2–3.7) | 839             | 3.7<br>(3.4–3.9) | 526            | 2.3<br>(2.1–2.5) | 2,239   | 9.8<br>(9.4–10.2) | 2,986                  | 13.1<br>(12.6–13.5) | 4,986     | 21.8<br>(21.2–22.4) | 1.31                             | 202.8   |
| 55–64                             | 452             | 2.0<br>(2.2–2.6) | 386             | 2.0<br>(1.8–2.2) | 166            | 0.9<br>(0.7–1.0) | 1,038   | 5.5<br>(5.2–5.8)  | 1,530                  | 8.1<br>(7.7–8.5)    | 2,436     | 12.9<br>(12.4–13.4) | 1.34                             | 268.6   |
| ≥65                               | 121             | 0.5<br>(0.4–0.6) | 136             | 0.6<br>(0.5–0.7) | 15             | —                | 284     | 1.2<br>(1.1–1.4)  | 737                    | 3.2<br>(3.0–3.4)    | 977       | 4.3<br>(4.0–4.5)    | 1.00                             | 65.4  |
| <b>Race/Ethnicity<sup>§</sup></b> |                 |                  |                 |                  |                |                  |         |                   |                        |                     |           |                     |                                  |   |
| White                             | 1,907           | 1.9<br>(1.8–2.0) | 2,320           | 2.3<br>(2.2–2.4) | 1,015          | 1.0<br>(0.9–1.1) | 5,757   | 5.7<br>(5.5–5.8)  | 7,990                  | 7.9<br>(7.8–8.0)    | 12,946    | 12.7<br>(12.5–12.9) | 1.50                             | 188.6   |
| Black                             | 148             | 0.7<br>(0.6–0.8) | 117             | 0.6<br>(0.5–0.7) | 414            | 2.0<br>(1.8–2.2) | 425     | 2.1<br>(1.9–2.3)  | 635                    | 3.1<br>(2.8–3.3)    | 1,217     | 5.9<br>(5.6–6.2)    | 1.71                             | 55.3  |
| American Indian/Alaska Native     | 25              | 1.9<br>(1.2–2.8) | 21              | 1.6<br>(1.0–2.5) | 22             | 1.7<br>(1.1–2.5) | 96      | 7.3<br>(5.9–9.0)  | 120                    | 9.2<br>(7.5–10.8)   | 190       | 14.5<br>(12.5–16.6) | 1.26                             | 190.0   |
| Asian/Pacific Islander            | 16              | —                | 13              | —                | 11             | —                | 40      | 0.5<br>(0.3–0.6)  | 87                     | 1.0<br>(0.8–1.3)    | 126       | 1.5<br>(1.2–1.8)    | 1.67                             | 50.0  |
| Hispanic                          | 99              | 0.4<br>(0.3–0.5) | 99              | 0.4<br>(0.3–0.5) | 127            | 0.5<br>(0.4–0.6) | 294     | 1.2<br>(1.0–1.3)  | 436                    | 1.9<br>(1.7–2.1)    | 794       | 3.2<br>(3.0–3.4)    | 2.19                             | 68.4  |
| <b>Intent</b>                     |                 |                  |                 |                  |                |                  |         |                   |                        |                     |           |                     |                                  |   |
| Unintentional                     | 1,349           | 0.9<br>(0.8–0.9) | 1,938           | 1.2<br>(1.2–1.3) | 1,457          | 0.9<br>(0.9–1.0) | 5,144   | 3.3<br>(3.2–3.4)  | 6,483                  | 4.1<br>(4.0–4.2)    | 11,168    | 7.1<br>(4.0–4.2)    | 1.75                             | 238.1   |
| Suicide                           | 624             | 0.4<br>(0.4–0.4) | 451             | 0.3<br>(0.3–0.3) | 52             | 0.0<br>(0.0–0.0) | 820     | 0.5<br>(0.5–0.6)  | 1,887                  | 1.2<br>(1.1–1.3)    | 2,748     | 1.8<br>(1.7–1.8)    | 0.94                             | 50.0  |
| Undetermined                      | 231             | 0.1<br>(0.1–0.2) | 189             | 0.1<br>(0.1–0.1) | 87             | 0.1<br>(0.0–0.1) | 658     | 0.4<br>(0.4–0.5)  | 908                    | 0.6<br>(0.5–0.6)    | 1,385     | 0.9<br>(0.8–0.9)    | 1.11                             | 50.0  |

**Abbreviations:** CI = confidence interval; M:F = male to female.

\* Drug-related homicide deaths are not included as a separate row because of small numbers, but are included in overall numbers. Deaths involving more than one type of drug were counted in multiple categories.

† Per 100,000 population.

§ Persons identified as Hispanic might be of any race. Persons identified as any of the other categories were non-Hispanic.

deaths among women compared with 8% among men. OPRs were involved in one in 10 suicides among women.

In 2010, women made 943,365 ED visits for drug misuse or abuse; a rate of 601 per 100,000 population (Table 2) (for every OPR overdose death there were 30 ED visits for OPR misuse or abuse). Cocaine or heroin (147.2), benzodiazepines (134.6), and OPR (129.6) were associated with the highest ED visit rates. ED visit rates among women for all drugs tended to be highest among those aged 25–34 years. The rates for all drug or OPR misuse- or abuse-related ED visits were not significantly different between men and women. The all drug rate for men was 1.35 times the rate for women in 2010, and the OPR rate for men was 1.2 times the rate for women.

During 2009–2010, rates for drug overdose deaths among women varied widely by state (Figure 1). Age-adjusted drug

overdose death rates ranged from 3.9 per 100,000 women in North Dakota to 18.5 in Nevada.

During 2004–10, OPR death rates and ED visit rates increased substantially among women (Figure 2). During this period, the rate of OPR deaths among women increased 70% and the rate of OPR misuse- or abuse-related ED visits more than doubled. Cocaine deaths and ED visits declined during the same period. Starting in 2008, more women visited EDs because of misuse or abuse of benzodiazepines or OPR than for cocaine.

## Conclusions and Comment

Since 2007, more women have died from drug overdoses than from motor vehicle traffic injuries, and in 2010, four times as many died as a result of drug overdose as were victims of

**TABLE 2. Drug misuse- or abuse-related emergency department visits among women, by selected characteristics and rates,\* and comparison with 2004 — Drug Abuse Warning Network, United States, 2010**

| Characteristic                    | Antidepressants |                            | Benzodiazepines |                              | Cocaine/Heroin |                               | Opioids        |                              | All prescription drugs |                               | All drugs      |                               | M:F rate ratio (all drugs), 2010 | % change (all drugs), 2004 to 2010 |
|-----------------------------------|-----------------|----------------------------|-----------------|------------------------------|----------------|-------------------------------|----------------|------------------------------|------------------------|-------------------------------|----------------|-------------------------------|----------------------------------|------------------------------------|
|                                   | No.             | Rate (CI)                  | No.             | Rate (CI)                    | No.            | Rate (CI)                     | No.            | Rate (CI)                    | No.                    | Rate (CI)                     | No.            | Rate (CI)                     |                                  |                                    |
| <b>Total</b>                      | <b>67,151</b>   | <b>42.8</b><br>(33.2–52.4) | <b>211,339</b>  | <b>134.6</b><br>(97.4–171.9) | <b>231,058</b> | <b>147.2</b><br>(100.8–193.6) | <b>203,417</b> | <b>129.6</b><br>(98.7–160.4) | <b>672,049</b>         | <b>428.2</b><br>(333.8–522.5) | <b>943,365</b> | <b>601.0</b><br>(472.0–730.1) | <b>1.35</b>                      | <b>47.0</b>                        |
| <b>Age groups (yrs)</b>           |                 |                            |                 |                              |                |                               |                |                              |                        |                               |                |                               |                                  |                                    |
| <18                               | 4,013           | 11.1<br>(5.9–16.2)         | 4,379           | 12.1<br>(6.4–17.8)           | 4,332          | 12.0<br>(6.0–17.9)            | 5,351          | 14.8<br>(9.8–19.7)           | 45,166                 | 124.6<br>(88.5–160.8)         | 66,353         | 183.1<br>(132.6–233.6)        | 0.99                             | 5.0                                |
| 18–24                             | 9,914           | 66.0<br>(42.8–89.3)        | 29,446          | 196.2<br>(130.2–262.2)       | 33,841         | 225.4<br>(163.0–287.9)        | 30,719         | 204.6<br>(130.6–278.6)       | 104,691                | 697.5<br>(538.1–856.8)        | 159,189        | 1,060.0<br>(830.6–1,290.4)    | 1.37                             | 45.0 <sup>†</sup>                  |
| 25–34                             | 15,368          | 75.2<br>(57.6–92.8)        | 57,262          | 280.3<br>(167.7–392.8)       | 65,405         | 320.1<br>(213.3–426.9)        | 47,246         | 231.2<br>(163.5–298.9)       | 154,672                | 757.0<br>(547.6–966.4)        | 225,190        | 1,102.2<br>(824.9–1,379.4)    | 1.31                             | 47.4                               |
| 35–44                             | 14,224          | 68.9<br>(52.8–85.1)        | 46,314          | 224.5<br>(157.8–291.1)       | 60,866         | 295.0<br>(197.4–392.5)        | 41,558         | 201.4<br>(146.3–256.5)       | 128,086                | 620.7<br>(468.4–773.1)        | 188,304        | 912.6<br>(701.0–1,124.2)      | 1.31                             | 33.2                               |
| 45–54                             | 15,301          | 66.9<br>(47.0–86.8)        | 43,457          | 190.1<br>(146.8–233.3)       | 52,035         | 227.6<br>(134.5–320.6)        | 43,860         | 191.8<br>(143.2–240.4)       | 128,633                | 562.6<br>(438.2–687.0)        | 179,531        | 785.2<br>(608.8–961.6)        | 1.46                             | 74.0 <sup>†</sup>                  |
| 55–64                             | 5,481           | 29.0<br>(19.9–38.2)        | 19,676          | 104.2<br>(68.4–140.0)        | 13,776         | 73.0<br>(27.7–118.2)          | 19,761         | 104.7<br>(79.6–129.7)        | 57,580                 | 305.0<br>(232.9–377.0)        | 71,132         | 376.7<br>(287.7–465.8)        | 1.53                             | 142.7 <sup>†</sup>                 |
| ≥65                               | 2,849           | 12.4<br>(5.5–19.4)         | 10,804          | 47.2<br>(28.5–65.8)          | — <sup>§</sup> | — <sup>§</sup>                | 14,922         | 65.1<br>(47.6–82.7)          | 52,892                 | 230.9<br>(175.2–286.6)        | 53,666         | 234.4<br>(178.2–290.3)        | 0.95                             | 86.9                               |
| <b>Race/Ethnicity<sup>¶</sup></b> |                 |                            |                 |                              |                |                               |                |                              |                        |                               |                |                               |                                  |                                    |
| White                             | 49,020          | 48.2<br>(36.1–60.2)        | 171,453         | 167.5<br>(114.2–222.8)       | 114,902        | 112.9<br>(76.1–149.7)         | 162,788        | 160.0<br>(114.6–205.4)       | 483,342                | 475.1<br>(352.6–597.6)        | 609,368        | 598.9<br>(452.7–745.2)        | 1.19                             | 91.5 <sup>†</sup>                  |
| Black                             | 7,314           | 35.5<br>(1.5–69.4)         | 17,204          | 83.4<br>(27.8–139.1)         | 83,460         | 404.7<br>(156.8–652.5)        | 19,531         | 94.7<br>(43.7–145.7)         | 84,077                 | 407.6<br>(205.3–610.0)        | 178,943        | 867.6<br>(413.7–1,321.5)      | 1.79                             | 34.3                               |
| Other and unknown race            | 6,921           | 71.1<br>(32.1–110.0)       | 13,948          | 143.2<br>(88.9–197.5)        | 16,071         | 165.0<br>(96.0–234.0)         | 12,147         | 124.7<br>(75.8–173.6)        | 54,575                 | 560.3<br>(356.2–764.4)        | 77,865         | 799.5<br>(495.3–1,103.7)      | 1.33                             | -36.2                              |
| Hispanic                          | 3,896           | 15.7<br>(7.2–24.1)         | 8,733           | 35.1<br>(17.4–52.8)          | 16,625         | 66.9<br>(24.4–109.4)          | 8,952          | 36.0<br>(18.1–53.9)          | 50,055                 | 201.4<br>(99.9–302.8)         | 77,190         | 310.5<br>(148.2–472.8)        | 1.80                             | — <sup>§</sup>                     |

Abbreviations: CI = confidence interval; M:F = male to female.

\* Per 100,000 population.

<sup>†</sup> Significant to at least  $p < 0.05$ .

<sup>§</sup> Numbers and rates are small and might be unstable.

<sup>¶</sup> Persons identified as Hispanic might be of any race. Persons identified as any of the other categories were non-Hispanic.

homicide. Men are more likely than women to die from drug overdose; however, between 1999 and 2010, the percentage increase in the rate of overdose deaths was greater for women (151%) than for men (85%). The prescribing of controlled substances, drug overdose deaths, and drug misuse- and abuse-related ED visits among women have risen despite numerous recommendations over the past decade for more cautious use of OPR and efforts to curb abuse and prevent deaths.

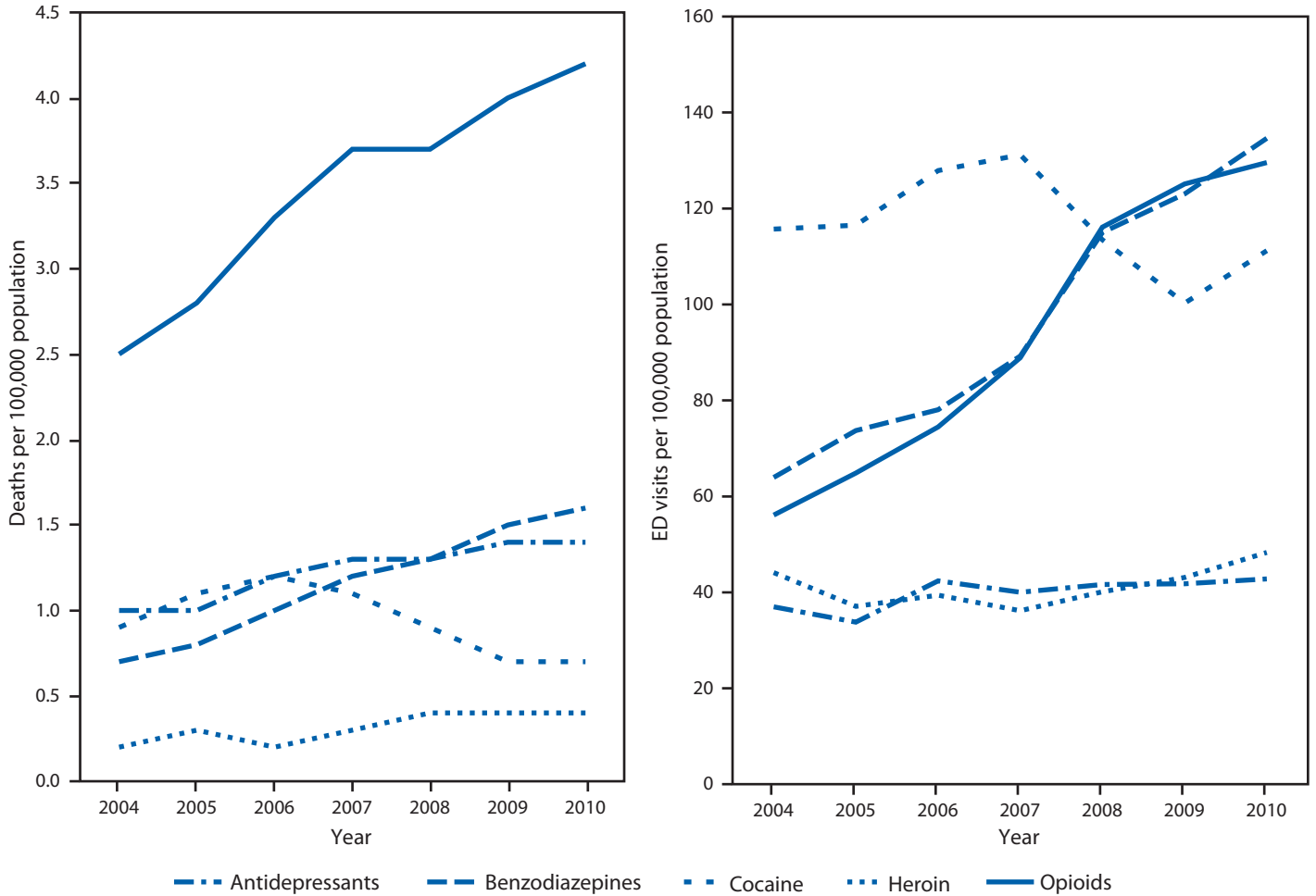
Between 1999 and 2010, OPR overdose deaths increased more than fivefold among women (a total of 47,935 OPR overdose deaths during that period). Abuse of OPR is a particular problem for women of childbearing age. Given the risk for neonatal abstinence syndrome as a result of OPR abuse during pregnancy (16), and the potential effects of OPR on an embryo during the first trimester (17), health-care providers should include discussions of pregnancy plans within the context of treatment and monitoring of patients taking OPR for medical or nonmedical reasons. Women treated for OPR abuse should be counseled regarding risks to the fetus of OPR abuse during pregnancy. The risks and benefits of treatment of chronic conditions with OPR during pregnancy should be weighed carefully (18). Use of benzodiazepines and antidepressants during pregnancy, or at any time in

combination with OPR, also should be considered carefully by women and their health-care providers. Psychological conditions, which might co-occur with pain or substance abuse (19), need to be assessed and addressed within a treatment regime.

The findings in this report are subject to at least four limitations. First, vital statistics underestimate the rates of drug involvement in deaths because the type of drug is not specified on many death certificates. Second, injury mortality data might underestimate by up to 35% the actual numbers of deaths for American Indian/Alaskan Natives and certain other racial/ethnic populations (e.g., Hispanics) because of the misclassification of race/ethnicity of decedents on death certificates (20). Third, all the drugs involved in ED visits might not be identified. Fourth, information on the motivation for use might be incomplete; some ED visits might have resulted from suicide attempts. Finally, distinguishing between drugs taken for nonmedical and medical reasons is not always possible, especially when multiple drugs are involved.

Public health interventions to reduce prescription drug overdose must strike a balance between reducing misuse and abuse and safeguarding legitimate access to treatment. Health-care providers who treat women for pain should

**FIGURE 2. Crude rates\* for drug overdose deaths and drug misuse- or abuse-related emergency department (ED) visits among women, by select drug class — National Vital Statistics System and Drug Abuse Warning Network, United States, 2004–2010**



\* Scales differ for deaths and emergency department visits.

follow prescribing guidelines. Providers should screen all their patients for psychological disorders and for use of psychotherapeutic drugs, either with or without a prescription. Checking state prescription drug monitoring programs before long-term prescribing of controlled substances should be a standard of care. Communities should try to increase access for women, especially pregnant women, to substance abuse treatment services. Medicaid programs, which enroll disproportionate numbers of young women, should ensure that the prescribing of controlled substances to their clients meets established guidelines. Overdose deaths and ED visits related to prescription drugs, especially OPR, continue to be unacceptably high, and targeted efforts are needed to reduce the number of deaths in this epidemic.

**Reported by**

*Karin A. Mack, PhD, Christopher M. Jones, PharmD, Leonard J. Paulozzi, MD, Div of Unintentional Injury Prevention, National Center for Injury Prevention and Control, CDC. Corresponding contributor: Karin Mack, kmack@cdc.gov, 770-488-4389.*

**References**

1. CDC. Vital signs: overdoses of prescription opioid pain relievers—United States, 1999–2008. *MMWR* 2011;60:1487–92.
2. Jones CM, Mack KA, Paulozzi LJ. Pharmaceutical overdose deaths, United States, 2010. *JAMA* 2013;309:657–9.
3. Jones CM. Frequency of prescription pain reliever nonmedical use: 2002–2003 and 2009–2010. *Arch Intern Med* 2012;172:1265–7.
4. Unick GJ, Rosenblum D, Mars S, Ciccarone D. Intertwined epidemics: national demographic trends in hospitalizations for heroin- and opioid-related overdoses, 1993–2009. *PLoS One* 2013;8(2):e54496.
5. CDC. Emergency department visits involving nonmedical use of selected prescription drugs—United States, 2004–2008. *MMWR* 2010;59:705–9.

6. Campbell CI, Weisner C, Leresche L, et al. Age and gender trends in long-term opioid analgesic use for noncancer pain. *Am J Public Health* 2010;100:2541–7.
7. Williams RE, Sampson TJ, Kalilani L, Wurzelmann JI, Janning SW. Epidemiology of opioid pharmacy claims in the United States. *J Opioid Manag* 2008;4:145–52.
8. Fillingim RB, King CD, Ribeiro-Dasilva MC, Rahim-Williams B, Riley JL 3rd. Sex, gender, and pain: a review of recent clinical and experimental findings. *J Pain* 2009;10:447–85.
9. Unruh AM. Gender variations in clinical pain experience. *Pain* 1996; 65:123–67.
10. Hall AJ, Logan JE, Toblin RL, et al. Patterns of abuse among unintentional pharmaceutical overdose fatalities. *JAMA* 2008;300:2613–20.
11. Saunders KW, Von Korff M, Campbell CI, et al. Concurrent use of alcohol and sedatives among persons prescribed chronic opioid therapy: prevalence and risk factors. *J Pain* 2012;13:266–75.
12. Daniell HW. Opioid endocrinopathy in women consuming prescribed sustained-action opioids for control of nonmalignant pain. *J Pain* 2008;9:28–36.
13. Fillingim RB, Ness TJ, Glover TL, et al. Morphine responses and experimental pain: sex differences in side effects and cardiovascular responses but not analgesia. *J Pain* 2005;6:116–24.
14. Substance Abuse and Mental Health Services Administration. Substance abuse treatment: addressing the specific needs of women. Treatment Improvement Protocol (TIP) 51. Rockville, MD: US Department of Health and Human Services, Substance Abuse and Mental Health Services Administration; 2009. Available at <http://www.ncbi.nlm.nih.gov/books/nbk83252>.
15. Tuchman E. Women and addiction: the importance of gender issues in substance abuse research. *J Addict Dis* 2010;29:127–38.
16. Patrick SW, Schumacher RE, Benneyworth BD, Krans EE, McAllister JM, Davis MM. Neonatal abstinence syndrome and associated health care expenditures: United States, 2000–2009. *JAMA* 2012;307:1934–40.
17. Broussard CS, Rasmussen SA, Reefhuis J, et al. Maternal treatment with opioid analgesics and risk for birth defects. *Am J Obstet Gynecol* 2011; 204(4):314.e1–11.
18. Chou R, Fanciullo GJ, Fine PG, et al. Clinical guidelines for the use of chronic opioid therapy in chronic noncancer pain. *J Pain* 2009;10:113–30.
19. Tetrault JM, Desai RA, Becker WC, Fiellin DA, Concato J, Sullivan LE. Gender and non-medical use of prescription opioids: results from a national US survey. *Addiction* 2008;103:258–68.
20. Arias E, Schauman WS, Eschbach K, Sorlie PD, Backlund E. The validity of race and Hispanic origin reporting on death certificates in the United States. *Vital Health Stat* 2008;148:1–23.