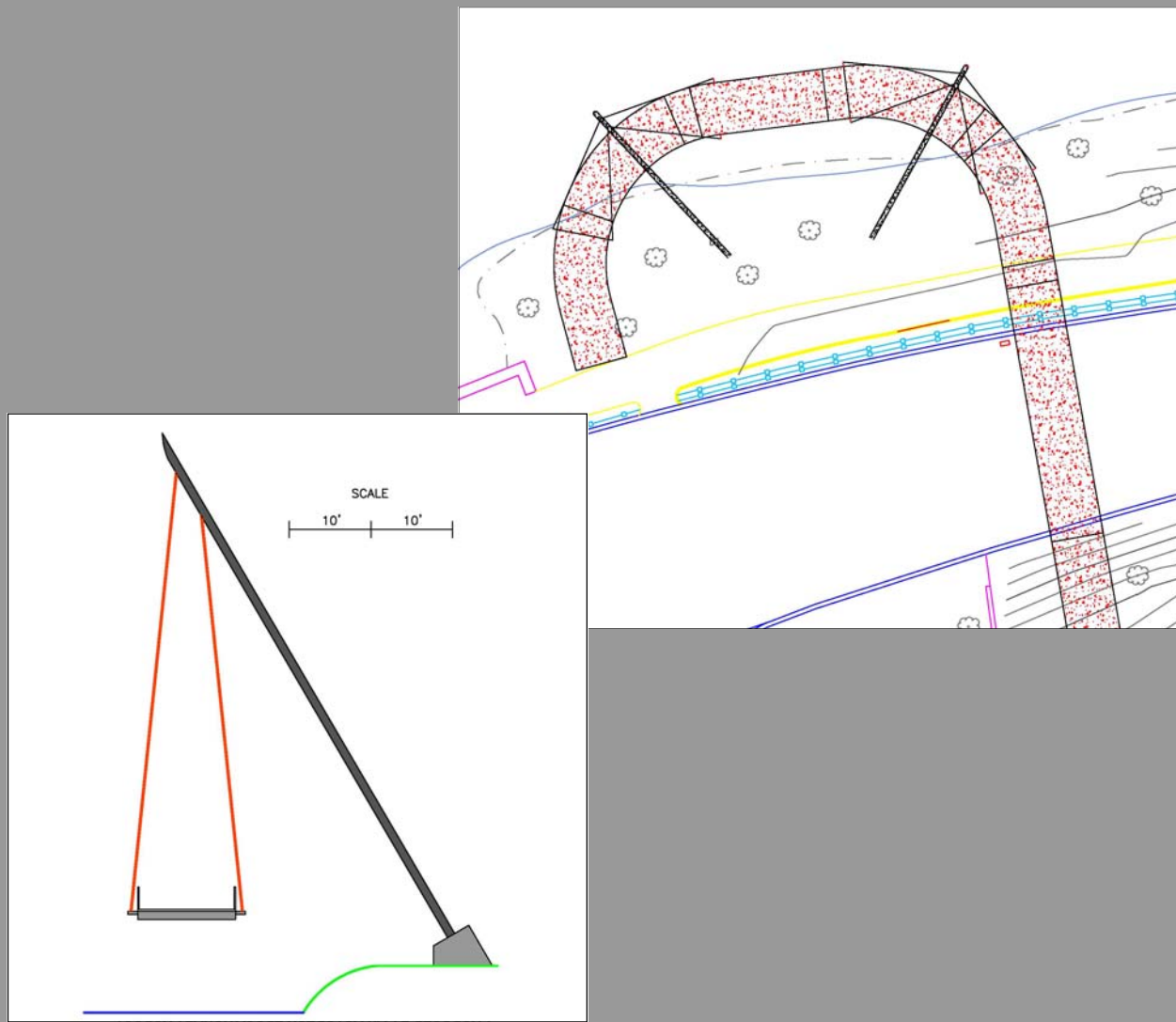


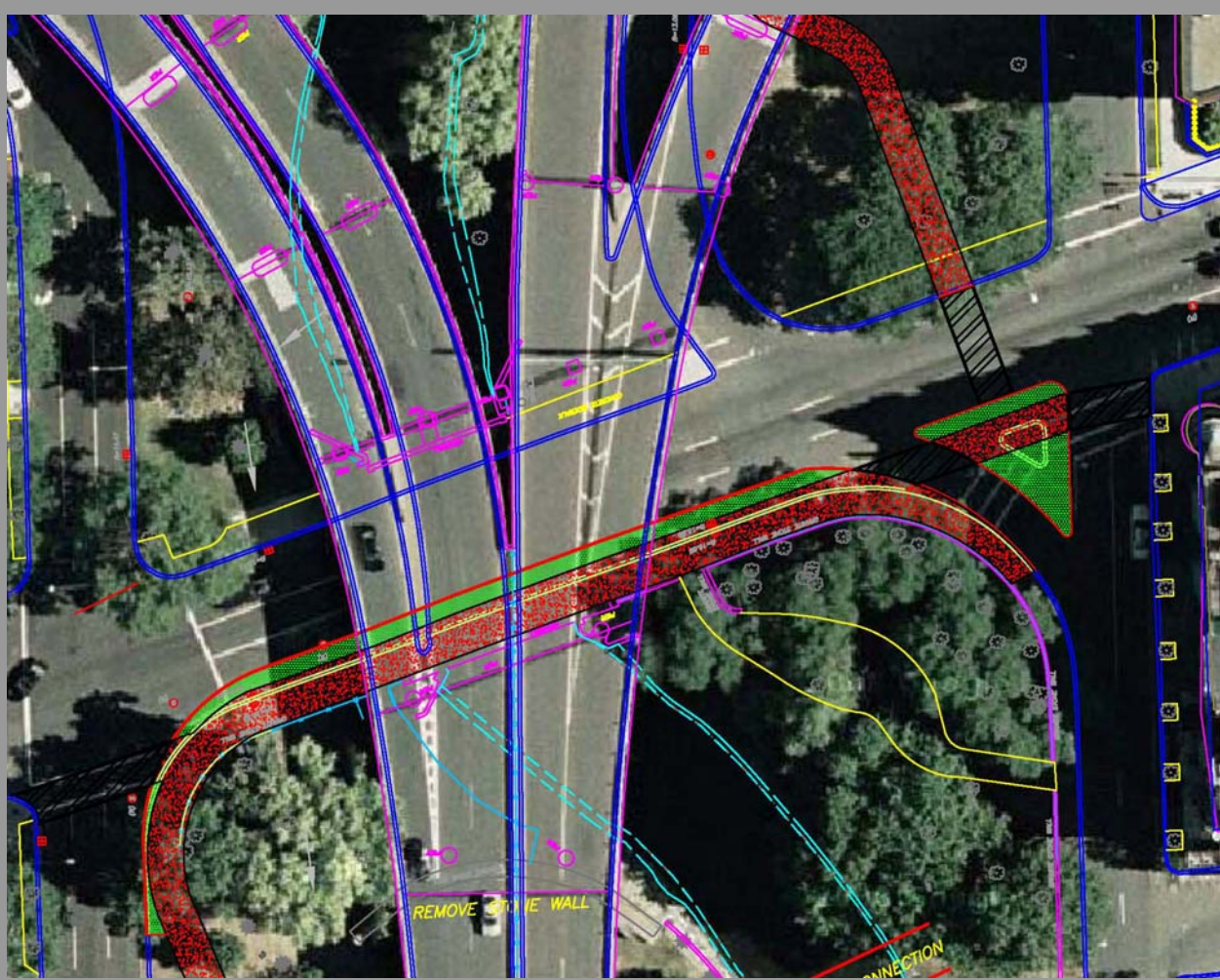
# CHARLES GATE CONNECTION

Connecting the Back bay Fens with the Charles

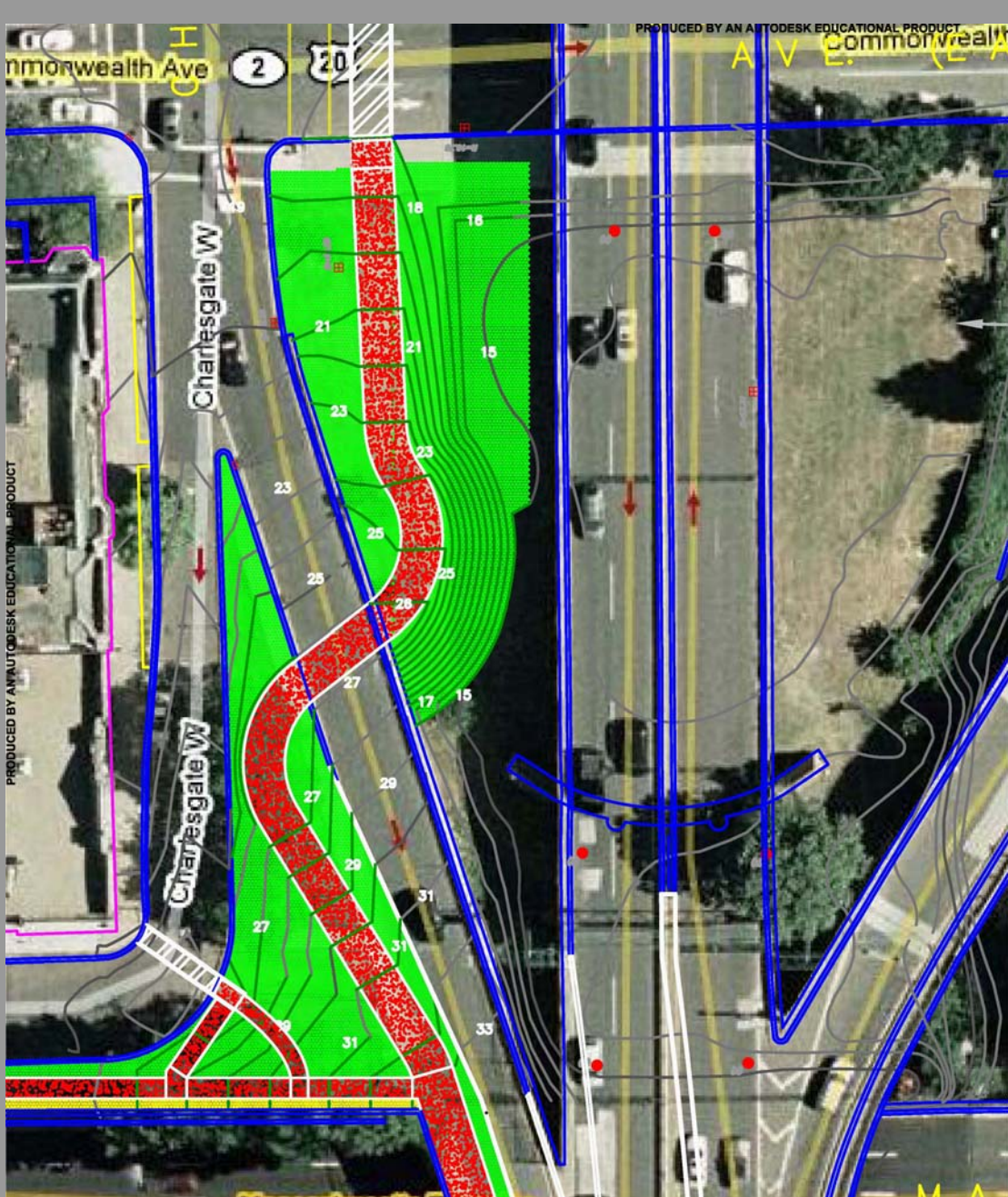
5) Design of a pedestrian bridge over Storrow Drive and connection into the Harvard



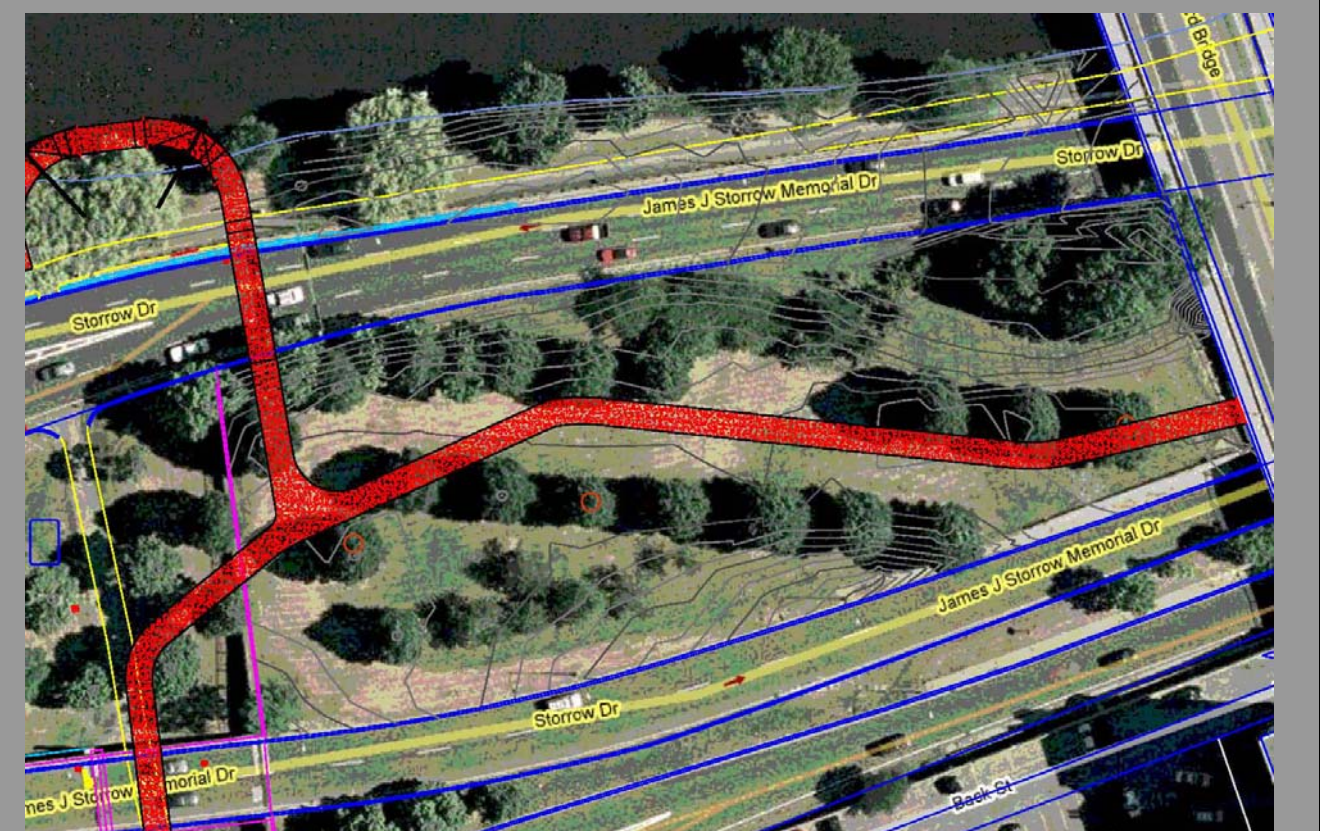
3) Redesign of Beacon St. between Charlesgate West and East to accommodate a 12' multi-use path and 5' buffer.



2) Design of an embankment along the on-ramp to Bowker Overpass near Commonwealth Ave East



4) Reclaiming a 2.5 acre park lost in the shadows of the Bowker Overpass.



1) Shift the median on the Bowker Overpass to accommodate a 12' multi-use path on the Southbound side.

